

An Introduction  
to  
**Nagle Design Works, LLC**  
for  
**Franklin Country Club**  
Franklin, Massachusetts







Jim Nagle, ASGCA  
Principal & Owner



1993 - BSLA West Virginia University

Practicing Golf Course Architecture for over 27 years

Background in Landscape Architecture & Land Planning

Frequent Conference Speaker

Contributed to published articles covering Classic and General Golf Architecture

Member of the American Society of Golf Course Architects



**NAGLE DESIGN WORKS**  
CONTEMPORARY • TIMELESS • GOLF • ARCHITECTURE



# Article & Podcast Links

## Podcasts & Videos:

<https://open.spotify.com/episode/2H3zEny2cuYiwrcRfXD27t?si=1ca3f933bf6e4e64>

<https://feedtheball.com/episode-81-jim-nagle/>

<https://thefriedegg.com/jim-nagle-on-lancaster-country-club/>

<https://www.golfcourseindustry.com/media/jim-nagle-golf-course-architect-design/>

<https://www.youtube.com/watch?v=N2CRPTP3AMI>

<https://www.youtube.com/watch?v=4BQs-zA7wsY&t=5s>

<https://www.youtube.com/watch?v=The8NapoBqo>

## Recent Articles:

<https://www.golfcoursearchitecture.net/digital/magazine/issue77/20/>

<https://www.golfcoursearchitecture.net/content/jim-nagle-hired-for-ncr-north-course-renovation-and-eagles-mere-masterplan>

<https://www.golfcoursearchitecture.net/content/jim-nagle-hired-for-ncr-north-course-renovation-and-eagles-mere-masterplan>

<https://thewalkinggolfer.com/q-a-with-golf-course-architect-jim-nagle-on-kirtland-cc.html>





## **Project Resume (Partial List):**

*Lancaster Country Club* – Lancaster, PA (site of the 2024 USGA Women's Open Championship)\*

*NCR Country Club* – Dayton, OH

*Kirtland Country Club* – Willoughby, OH\*

*Philadelphia Country Club* – Gladwyne, PA (Cohost of the Medal Play for the 2026 USGA Men's Amateur Championship)\*

*Vesper Country Club* – Tyngsboro, MA\*

*Manufacturer's Golf & Country Club* – Ft. Washington, PA\*

*Country Club of Buffalo* – Williamsville, NY\* (Host of the 2027 U.S. Women's Mid-Am and 2032 U.S. Senior Amateur)

*Meridian Hills Country Club* – Indianapolis, IN

*Omni Bedford Springs Resort* – Bedford, PA (Co-design with Ron Forse)

*Davenport Country Club* – Pleasant Valley, IA (Co-design with Ron Forse)\*

*Bryn Mawr Country Club* – Lincolnwood, IL

*The Rolling Rock Club* – Ligonier, PA (Co-design with Ron Forse)

*Westwood Country Club* – Rocky River, OH

*Boca Rio Golf Club* – Boca Raton, FL (Host of the Gainbridge LPGA at Boca Rio in 2020 and 2022)

*Preakness Hills Country Club* – Wayne, NJ

*Waccabuc Country Club* – Waccabuc, NY

*Beacon Hill Country Club* – Atlantic Highlands, NJ

*Navesink Country Club* – Red Bank, NJ

*Berkshire Country Club* – Reading, PA

*Seven Oaks Golf Course (Colgate University)* – Hamilton, NY

*Bald Peak Colony Club* – Melvin Village, NH

*Butler Country Club* – Butler, PA

*\*Golf Course ranked in the 2023 Golfweek Magazine Top 200 Classic Courses*





# Kirtland Country Club

Willoughby, Ohio

Multiple Renovations

Jim Nagle, Lead Architect for Forse Design, Inc.

**“Throughout his tenure as Lead Course Architect, Mr. Nagle has demonstrated an unwavering commitment to excellence and a profound understanding of the intricate nuances of golf course architecture. His visionary approach, coupled with meticulous attention to detail, has resulted in the revitalization of our course that is both aesthetically stunning and strategically challenging. Beyond his technical prowess, Mr. Nagle has proven to be an exemplary collaborator. His open communication and receptive attitude have fostered a strong sense of partnership with our club’s management team.”**

Mark Petzing, CCM





1. RELOCATE ALL OF THE TEES TO THE LEFT ADDING A NEW BLACK TEE WHERE SHOWN
2. ADD A NEW SILVER/COPPER TEE TO THE LEFT OF THE EXISTING SILVER TEE
3. EXPAND THE FESCUE AREA TO EILIMINATE PLAY FROM #12 TEES INTO THE 7TH HOLE
4. REMOVE THE EXISTING FAIRWAY BUNKER. ADD A NEW FAIRWAY BUNKER INTERRUPTING A PORTION OF THE FAIRWAY
5. ADD A BUNKER DUET IN THE OPEN AREA LEFT OF THE FAIRWAY. BUNKERS REINFORCE THE STRATEGY OF PLAYING UP THE LEFT SIDE
6. EXTEND FESCUE INTO THE BAIL-OUT AREA RIGHT OF THE FAIRWAY

- BLACK - 355 YDS
- GOLD - 327 YDS
- WHITE - 312 YDS
- SILVER - 276 YDS
- COPPER - 269 YDS

Hole No. **7**  
Par 4

“As we began our search for a golf course architect, we knew that we had to find someone who understood the importance of maintaining the historical integrity of an untouched Dick Wilson gem along with being able to modernize the course to today’s expectations. After interviewing several prominent firms, it was a unanimous choice that Jim Nagle and Nagle Design Works was the best choice. Jim’s knowledge of classic golf course designs and the importance that he placed on keeping the Dick Wilson integrity intact, were two of the main reasons that he is ‘our guy’. Jim is already a part of the NCRCC family and we are looking forward to everything that he has in store for the North Course restoration.””

*Jeff Grant – CCM/COO NCR Country Club*





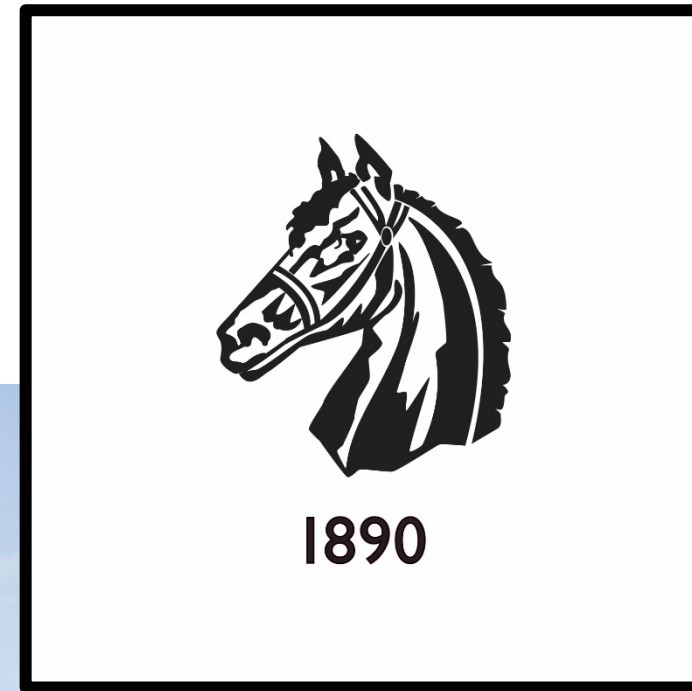
“Blending our Centennial Nine (designed in the 1980’s) into the classic vision of our Spring Mill Course (designed by William Flynn in the 1920’s) was a monumental task of historical understanding, appreciation for landforms, and golf vision. I can’t imagine having reconstructed the Centennial Course with any other golf architect other than Jim Nagle. His first steps were understanding and respect for the prior visions before evaluating what could be improved. He didn’t create “his course” but made our Centennial Nine an integrated part of Philadelphia Country Club. Many of our Members say it is now our best “Match Play Nine”

*Jim Black – Past Club President and Centennial Committee Chairman*





# Philadelphia CC - Spring Mill Course







## Lancaster Country Club

Lancaster, PA

William Flynn - Original Design

Restoration by Forse Design – Jim Nagle, Lead Architect

---

*“From a major restoration to preparing our old course for the Women’s Open and the development of long range plans, Jim Nagle has been a valued partner for over eighteen years and the results have been outstanding.”*

*Rory Connaughton*

*Green Committee Chair and Club Historian*

*Lancaster Country Club*



# Concord Country Club Holes 14 thru 16



*“Through Jim Nagle’s rebuild of holes 14-16, the course now has three great holes that created better variety in the par 3’s, reward fair shots and properly penalize poor ones, allowed a unique history to be reintroduced, improved pace-of-play and enhanced an already great golf experience.”*

*Greg D’Antonio, Golf Course Superintendent*



LINKSGEMS



# Meridian Hills Country Club

An aerial photograph of a golf course green at Meridian Hills Country Club. The green is surrounded by several sand traps of various shapes and sizes. A light-colored path or fairway edge runs along the right side of the green. The surrounding area is lush with green grass and scattered trees, with a dense line of trees in the background under a clear sky.

*“Perhaps the most reassuring part of working with Jim on any assignment is the amount of care, detail, and preparation that he puts into his considerations and solutions; be it working with committees and boards to understand challenges around defining an architectural identity, or planning out strategies to find efficiencies in solutions, and everywhere else along the way. The level of thought and care that goes into his recommendations leaves you with confidence that not only do you have the right solutions, but you also have an invaluable teammate at your side.”*

*Jared Weight, Golf Course Superintendent*



# Feed. The. Ball.

Podcast with  
Derek Duncan  
Architecture Editor – Golf Digest

**“Nagle has seen all sides of the business from pure restoration steeped in intensive research, to working with clubs and tweaking their pedigreed layouts to compensate for the distance players are driving the ball and the new demands of improved agronomics and turf conditions.”**

**“Nagle has been doing this for over 25 years and is as experienced, measured and knowledgeable about architects from William Flynn, Bill Langford and Charles Alison as it gets. He’s also a great communicator, whose intelligence and assuredness gives clubs confidence their courses are in good hands.”**

The screenshot shows the website for 'Feed. The. Ball.', which features a decorative logo at the top center. The navigation menu includes 'Home', 'Essays', 'Podcasts', 'Gold Star Courses', and 'Other Places'. The main content area displays the title 'Episode 81: Jim Nagle' with a date of 'October 18, 2022' and a large photograph of a golf course. A search bar is located in the top right corner. On the right sidebar, there are sections for 'Recent Posts' and 'Archives'. The 'Recent Posts' section lists several previous episodes, including 'Episode 81: Jim Nagle', 'Feed the Ball Salon Vol. 23, ft. Jason Straka', 'Feed the Ball Salon Vol. 22, ft. Andy Staples', 'Feed the Ball Salon Volume 21, ft. Chris Cochran', 'Episode 80: Joe Jemsek on Dick Wilson', and 'Feed the Ball Salon Vol. 20, ft. Dave Axland and Tim Liddy'. The 'Archives' section lists months from October 2022 down to May 2022.



# PLAN EXAMPLES



**NAGLE DESIGN WORKS**

CONTEMPORARY • TIMELESS • GOLF • ARCHITECTURE

**The forthcoming plan examples were developed on projects with Jim Nagle as the lead architect while employed with Forsee Design, Inc.**





SPRING MILL RESTORATION PROJECT  
**PHILADELPHIA COUNTRY CLUB**  
 GLADWYNE, PENNSYLVANIA  
 MAY 24, 2022



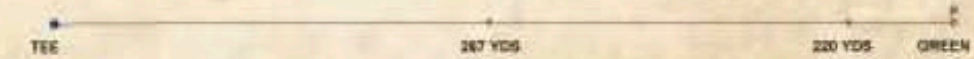
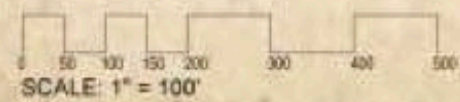
- LEGEND:**
- PROPOSED BUNKER
  - ELIMINATE EXISTING FEATURE
  - REBUILT BUNKER
  - EXISTING CART PATH
  - LAZER-LEVEL/RESURFACE EXISTING TEE
  - PROPOSED CART PATH
  - REBUILD/EXPAND TEE
  - EXISTING TREES
  - EXPAND GREEN
  - EXISTING TREES TO BE REMOVED
  - RECONTOUR FAIRWAY
  - PROPOSED TREES

PHILADELPHIA COUNTRY CLUB  
 Proposed Course

HOLE	1	2	3	4	5	6	7	8	9	10	11	12	13	14	15	16	17	18
BLACK	360	370	380	390	400	410	420	430	440	450	460	470	480	490	500	510	520	530
BLUE	350	360	370	380	390	400	410	420	430	440	450	460	470	480	490	500	510	520
WHITE	340	350	360	370	380	390	400	410	420	430	440	450	460	470	480	490	500	510
RED	330	340	350	360	370	380	390	400	410	420	430	440	450	460	470	480	490	500
YELLOW	320	330	340	350	360	370	380	390	400	410	420	430	440	450	460	470	480	490
GREEN	310	320	330	340	350	360	370	380	390	400	410	420	430	440	450	460	470	480
PURPLE	300	310	320	330	340	350	360	370	380	390	400	410	420	430	440	450	460	470
TEAL	290	300	310	320	330	340	350	360	370	380	390	400	410	420	430	440	450	460
PALE GREEN	280	290	300	310	320	330	340	350	360	370	380	390	400	410	420	430	440	450
YELLOW-GREEN	270	280	290	300	310	320	330	340	350	360	370	380	390	400	410	420	430	440
GREEN-YELLOW	260	270	280	290	300	310	320	330	340	350	360	370	380	390	400	410	420	430
YELLOW	250	260	270	280	290	300	310	320	330	340	350	360	370	380	390	400	410	420
GREEN	240	250	260	270	280	290	300	310	320	330	340	350	360	370	380	390	400	410
YELLOW-GREEN	230	240	250	260	270	280	290	300	310	320	330	340	350	360	370	380	390	400
GREEN-YELLOW	220	230	240	250	260	270	280	290	300	310	320	330	340	350	360	370	380	390
YELLOW	210	220	230	240	250	260	270	280	290	300	310	320	330	340	350	360	370	380
GREEN	200	210	220	230	240	250	260	270	280	290	300	310	320	330	340	350	360	370
YELLOW-GREEN	190	200	210	220	230	240	250	260	270	280	290	300	310	320	330	340	350	360
GREEN-YELLOW	180	190	200	210	220	230	240	250	260	270	280	290	300	310	320	330	340	350
YELLOW	170	180	190	200	210	220	230	240	250	260	270	280	290	300	310	320	330	340
GREEN	160	170	180	190	200	210	220	230	240	250	260	270	280	290	300	310	320	330
YELLOW-GREEN	150	160	170	180	190	200	210	220	230	240	250	260	270	280	290	300	310	320
GREEN-YELLOW	140	150	160	170	180	190	200	210	220	230	240	250	260	270	280	290	300	310
YELLOW	130	140	150	160	170	180	190	200	210	220	230	240	250	260	270	280	290	300
GREEN	120	130	140	150	160	170	180	190	200	210	220	230	240	250	260	270	280	290
YELLOW-GREEN	110	120	130	140	150	160	170	180	190	200	210	220	230	240	250	260	270	280
GREEN-YELLOW	100	110	120	130	140	150	160	170	180	190	200	210	220	230	240	250	260	270
YELLOW	90	100	110	120	130	140	150	160	170	180	190	200	210	220	230	240	250	260
GREEN	80	90	100	110	120	130	140	150	160	170	180	190	200	210	220	230	240	250
YELLOW-GREEN	70	80	90	100	110	120	130	140	150	160	170	180	190	200	210	220	230	240
GREEN-YELLOW	60	70	80	90	100	110	120	130	140	150	160	170	180	190	200	210	220	230
YELLOW	50	60	70	80	90	100	110	120	130	140	150	160	170	180	190	200	210	220
GREEN	40	50	60	70	80	90	100	110	120	130	140	150	160	170	180	190	200	210
YELLOW-GREEN	30	40	50	60	70	80	90	100	110	120	130	140	150	160	170	180	190	200
GREEN-YELLOW	20	30	40	50	60	70	80	90	100	110	120	130	140	150	160	170	180	190
YELLOW	10	20	30	40	50	60	70	80	90	100	110	120	130	140	150	160	170	180
GREEN	0	10	20	30	40	50	60	70	80	90	100	110	120	130	140	150	160	170



FORSE DESIGN, INC.  
 1800 BAZOOKA DRIVE  
 NEW ORLEANS BEACH, FL 32218  
 724-496-1727  
 www.forse@forse.com



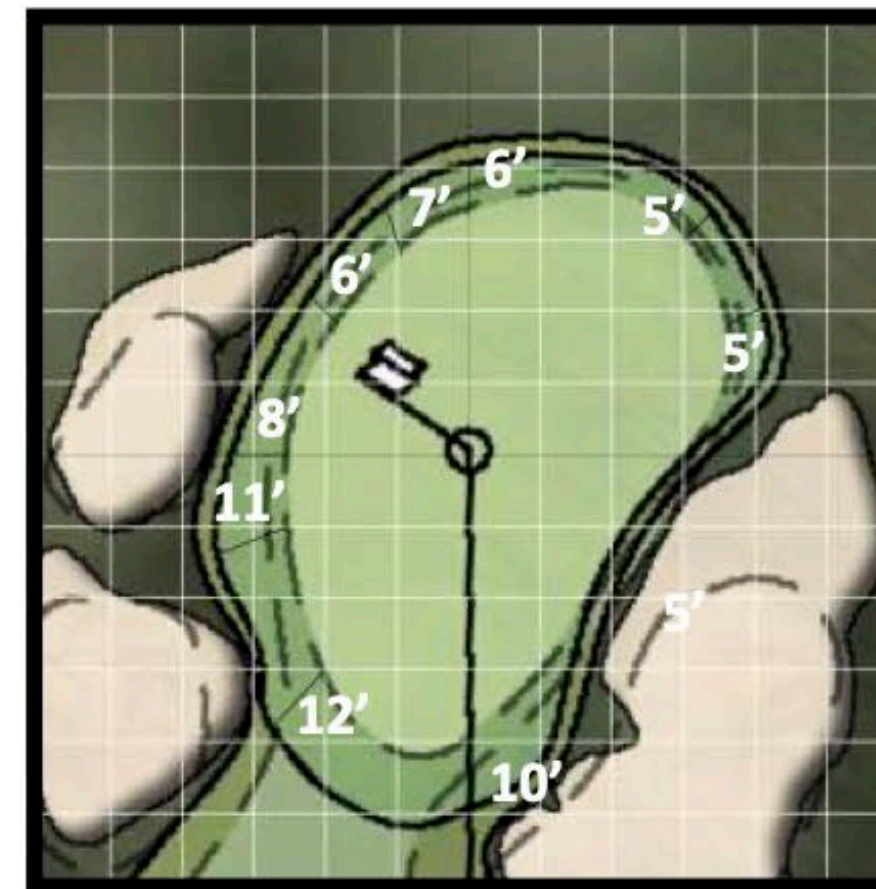
FORSE DESIGN, INC. YARDAGE STANDARDS FOR TEE PLAYERS

# FINAL RENDERED MASTER PLAN





1. EXTEND BLACK TEE 10 YARDS
2. RELOCATE GOLD TEE TO THE LEFT.
3. RESTORE WILLIAM FLYNN DESIGN INTENT BY RELOCATING 3RD BUNKER FARTHER FROM THE TEES.
4. REPLACE DECLINING TREES WITH A SPECIMEN OAK.
5. DEEPEN BUNKER APPROXIMATELY 1'.
6. REBUILD AND EXPAND GREEN TO ORIGINAL OUTLINE.
7. RESTORE LEFT SIDE OF FAIRWAY TO RECAPTURE PLAYING ANGLE INTO GREEN



DETAIL OF GREEN

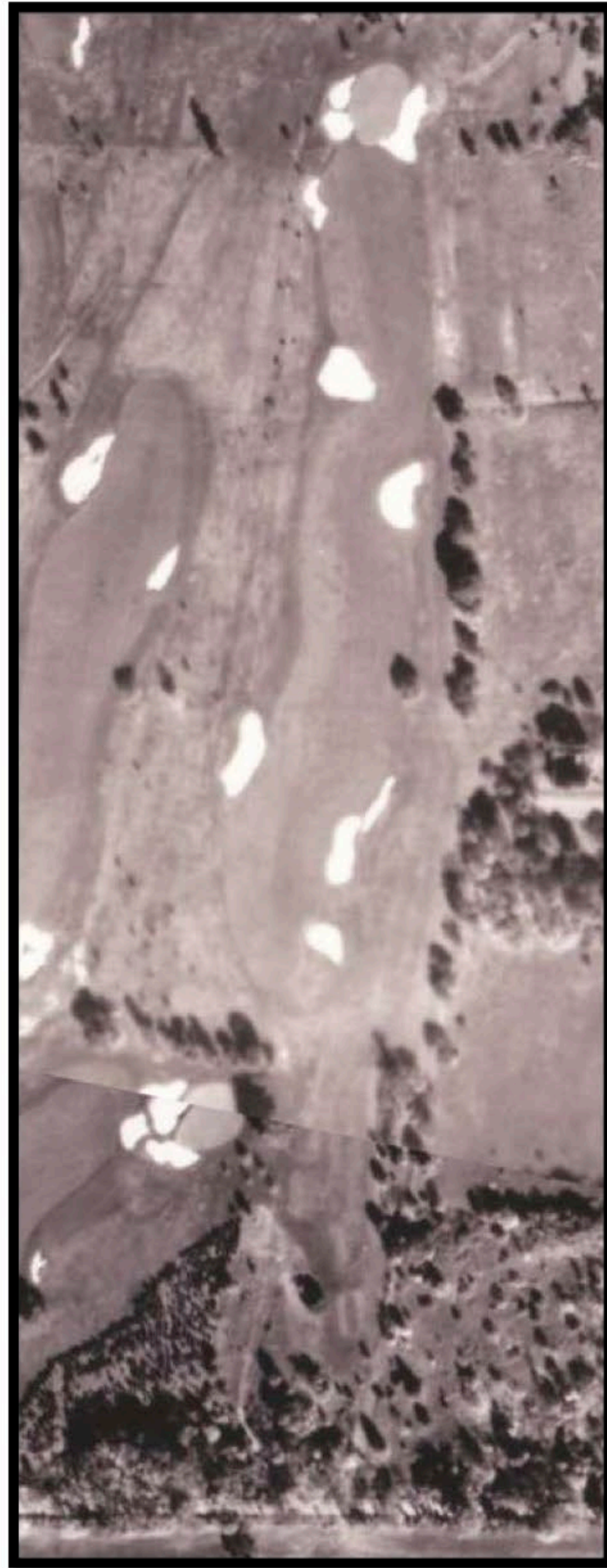
SCALE: ONE BLOCK EQUALS TEN FEET

Hole No. **3**  
Par 5

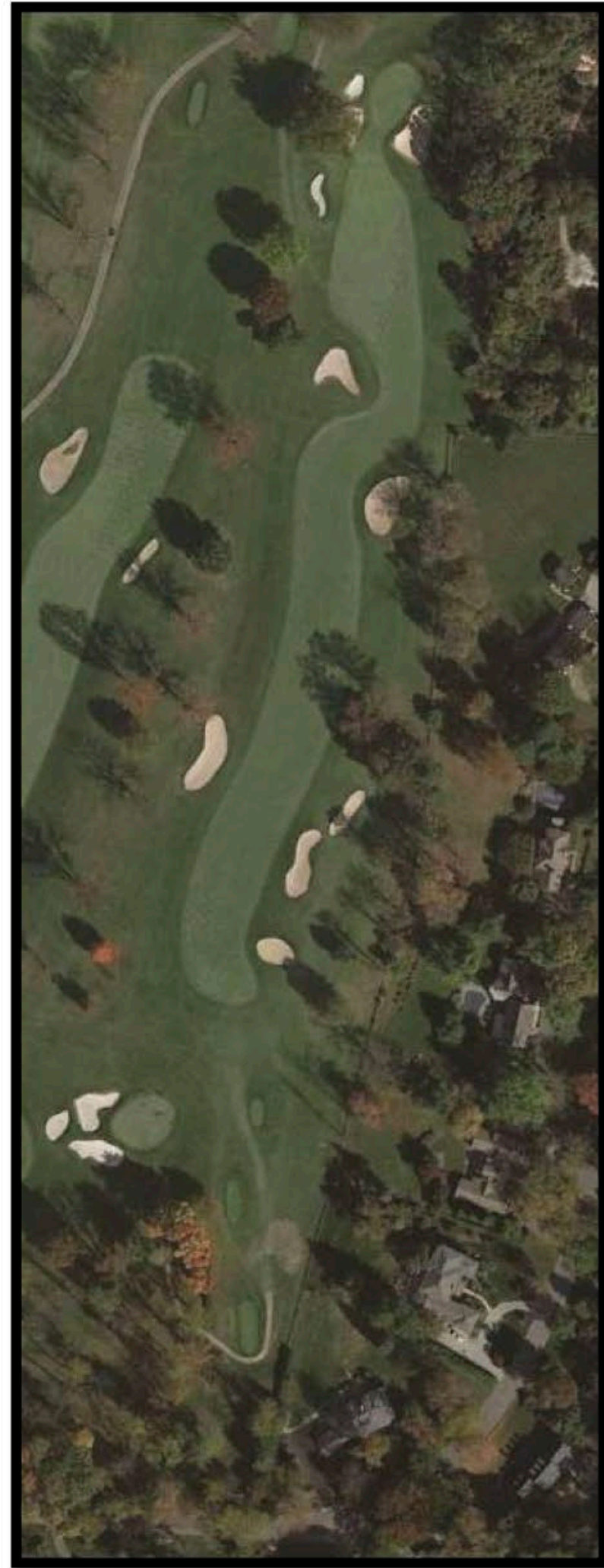


# HOLE-BY-HOLE SUMMARY

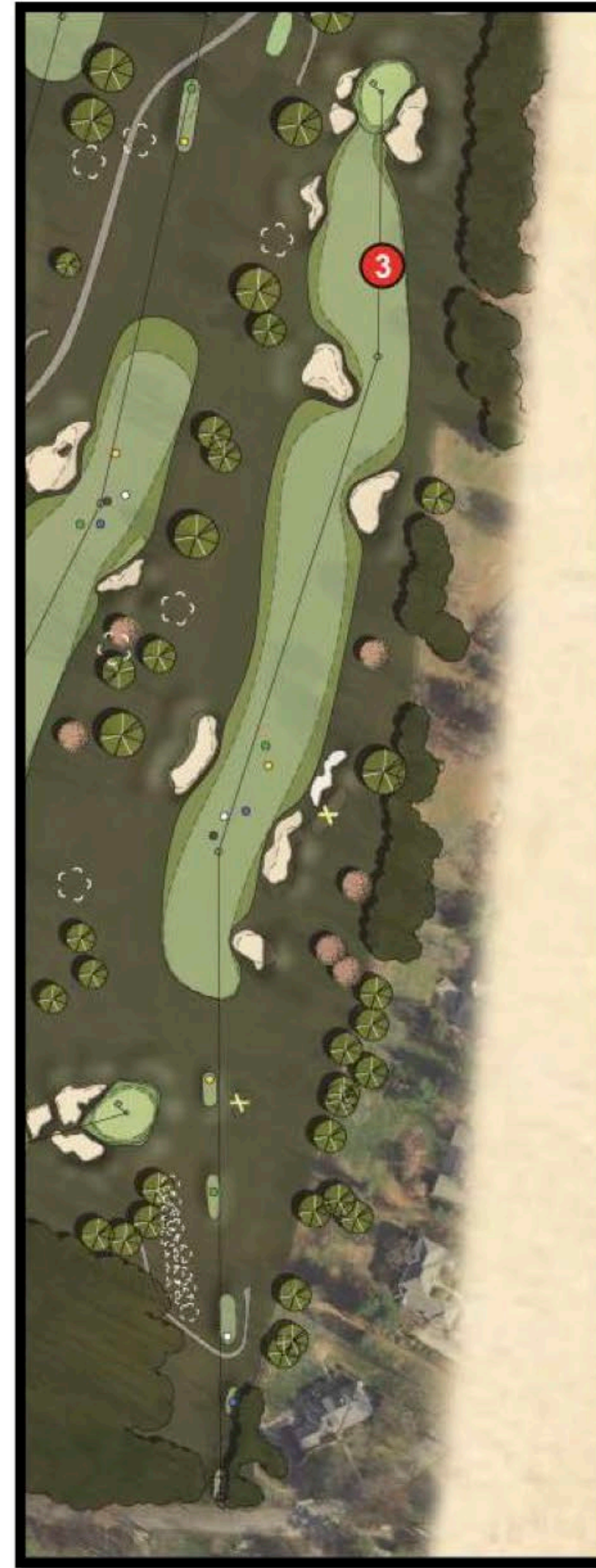




AERIAL PHOTOGRAPH - 1939



EXISTING COURSE



PROPOSED PLAN



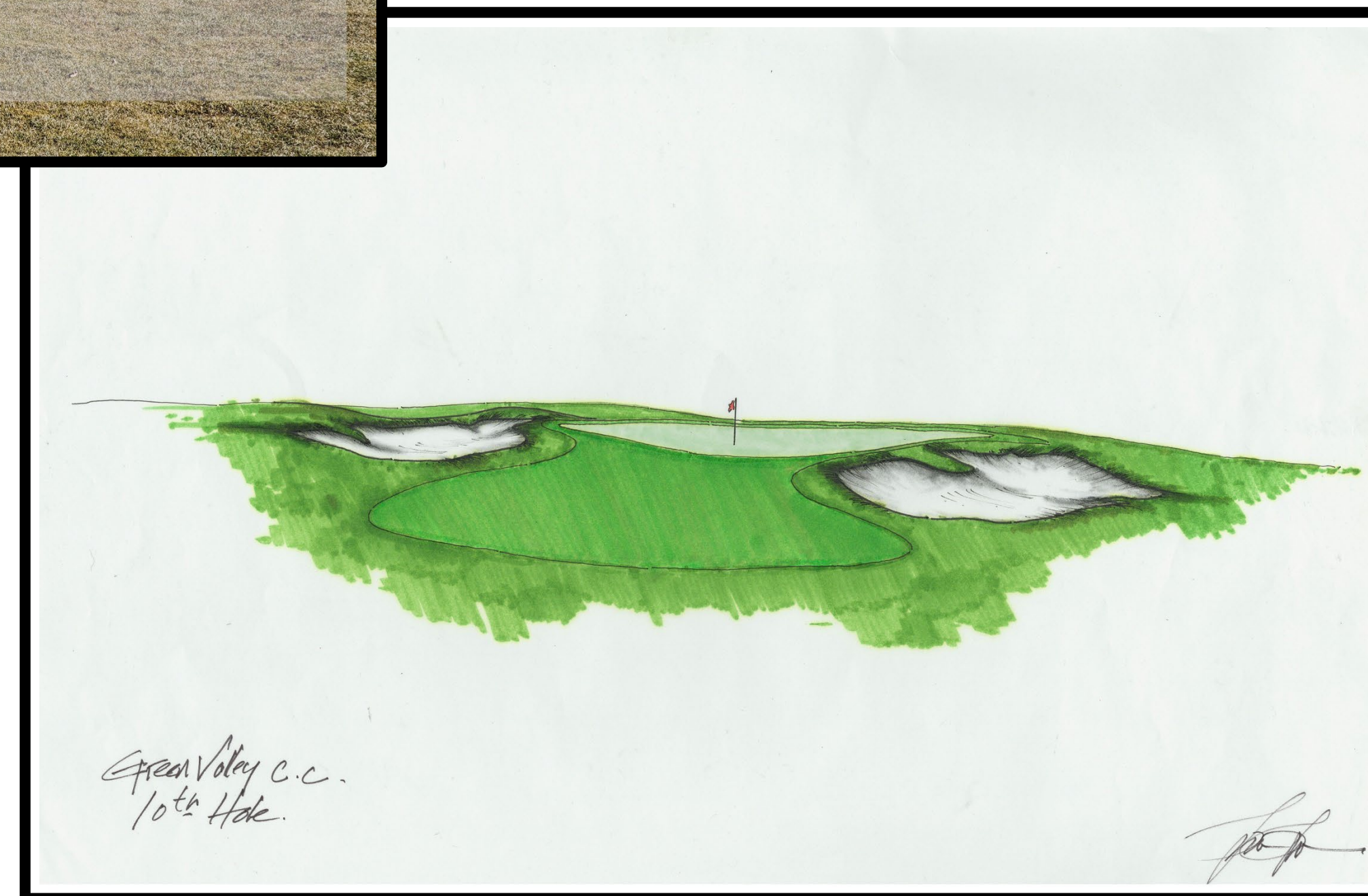
EVOLUTION OF A GOLF HOLE – USED PRIMARILY WITH FULL RESTORATION PROJECTS





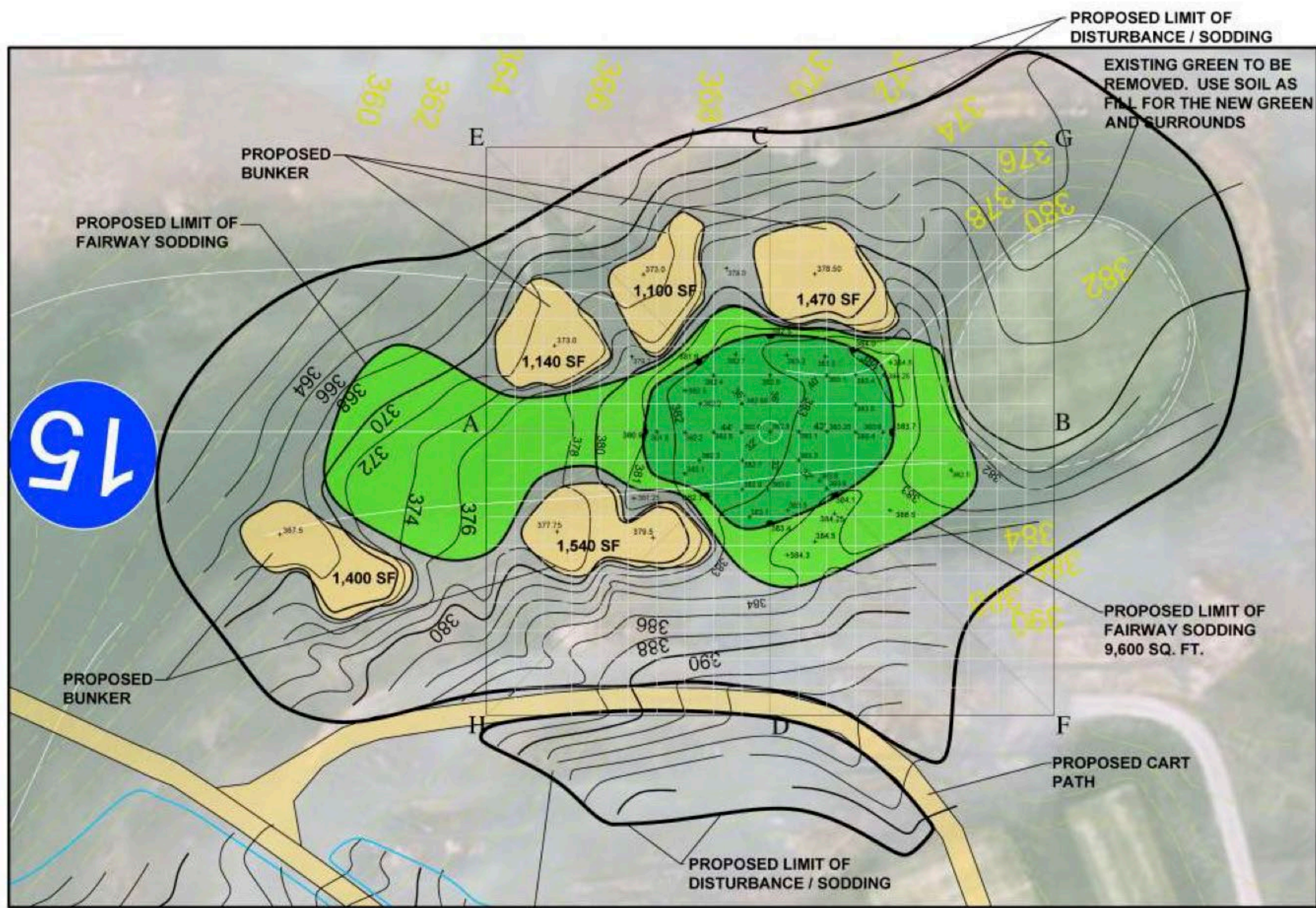
**SOME CLUBS WILL REQUEST MULTIPLE CONCEPTUAL PLANS FOR THE SAME HOLE**





HAND DRAWN SKETCHES CAN PROVIDE GREATER DETAIL FOR BUNKER EDGES





4,500 S.F. - PROPOSED WITHOUT COLLAR  
HOLE 15 GREENSITE - PLAN VIEW

AREA ABOVE PATH TO BE SEED TO FESCUE BY THE OWNER. SOIL PREP BY THE CONTRACTOR

SCALE: 1"= 20'

**DETAILED PLAN FOR A NEW PAR 3 15TH HOLE  
GREEN AND SURROUNDS**



CONSTRUCTION DOCUMENTS  
**CONCORD COUNTRY CLUB**  
CONCORDVILLE, PENNSYLVANIA  
AUGUST 27, 2019



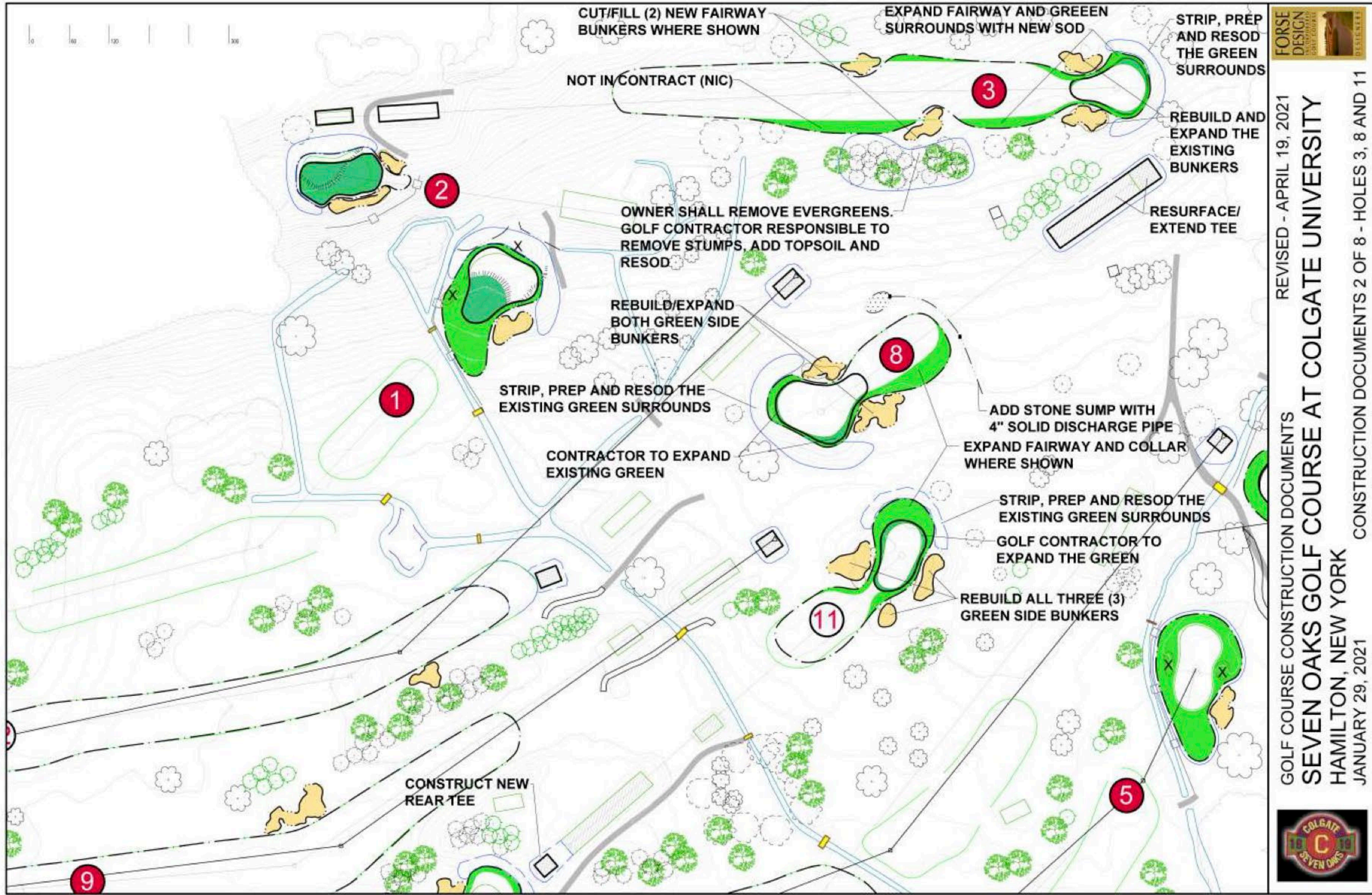
HOLE 15





**COMPLETED PAR 3 15TH HOLE**





GOLF COURSE CONSTRUCTION DOCUMENTS  
**SEVEN OAKS GOLF COURSE AT COLGATE UNIVERSITY**  
 HAMILTON, NEW YORK  
 JANUARY 29, 2021

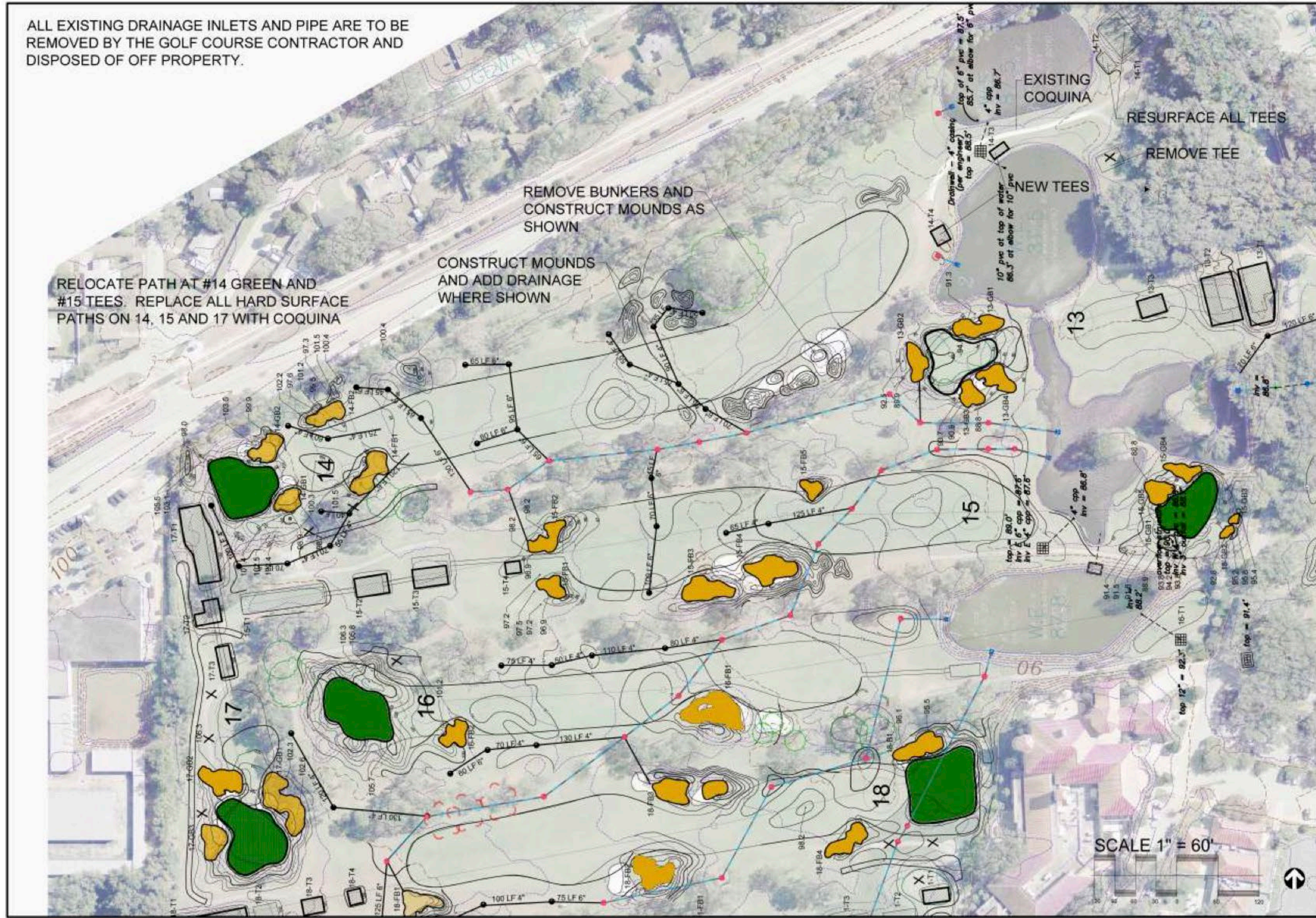
REVISED - APRIL 19, 2021  
 CONSTRUCTION DOCUMENTS 2 OF 8 - HOLES 3, 8 AND 11



**CONSTRUCTION DOCUMENTS WHICH ARE EASILY READ LEAVING NO QUESTION AS TO THE WORK AREA**



ALL EXISTING DRAINAGE INLETS AND PIPE ARE TO BE REMOVED BY THE GOLF COURSE CONTRACTOR AND DISPOSED OF OFF PROPERTY.



HOLES 14, 15, 16 & 17  
**COUNTRY CLUB OF ORLANDO**  
 ORLANDO, FLORIDA  
 SEPTEMBER 29, 2016



SHEET 6 OF 6

SCALE 1" = 60'



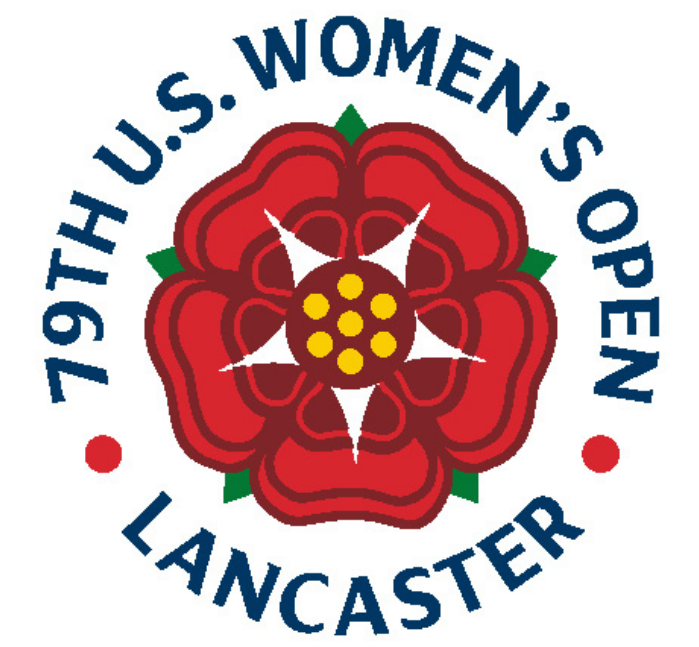
**DETAILED GRADING AND DRAINAGE PLANS**



# DIGITAL ANIMATION FLYOVERS & STILL IMAGES

The forthcoming plan examples were developed on projects with Jim Nagle as the lead architect while employed with Forse Design, Inc.





Lancaster Country Club – Hole #14 with after photo



# Philadelphia Country Club Digital Animation Still Images



1890



A large, dark silhouette of a tree stands in the center of the frame. The sun is positioned behind the tree's canopy, creating a bright, glowing effect with rays of light. The background is a soft, hazy gradient of orange and yellow, suggesting a sunrise or sunset. The overall mood is warm and serene.

**THANK YOU!**